

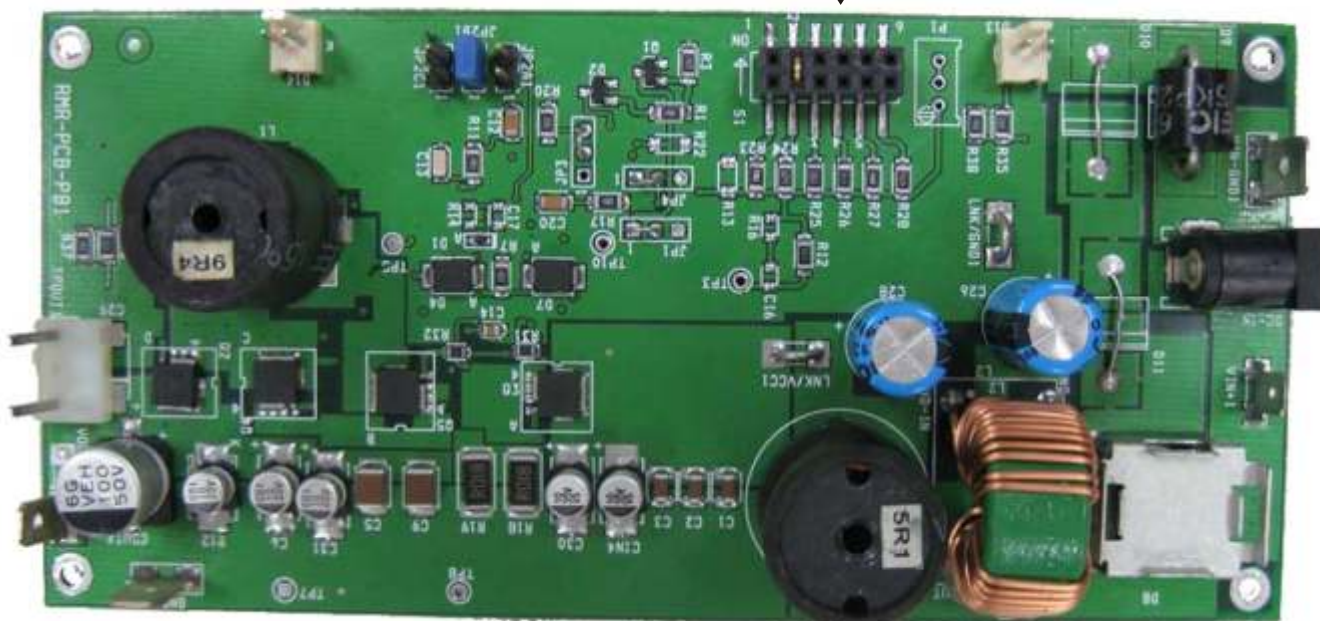
OUTPUT VOLTAGE SETTINGS

RAM-234-PB1U DC-DC POWER BOX

PRIOR TO USING THIS POWER BOX THE PRINTED CIRCUIT BOARD MUST HAVE THE OUTPUT VOLTAGE SET USING A JUMPER THAT IS PROVIDED TO MATCH THE ELECTRONIC DEVICE BEING POWERED.

Input voltage: 12-28V DC

JUMPER LOCATION



Output voltage setting through jumper	Volt	Amps	Watts
Position 1	19.9V	5	80watts
Position 2	15.6V	5.1	80watts
Position 3	16V	5	80watts
Position 4	18.5V	4.3	80watts
Position 5	19V	4.2	80watts
Position 6	20V	4	80watts

12-28 DC VOLT INPUT IS INTERNALLY REGULATED NO NEED TO SET JUMPERS FOR THIS FUNCTION.